



REPUBLIC OF KENYA  
**MINISTRY OF ENVIRONMENT, NATURAL RESOURCES &  
 REGIONAL DEVELOPMENT AUTHORITIES**  
**KENYA METEOROLOGICAL DEPARTMENT**

Dagoretti Corner, Ngong Road, P. O. Box 30259, 00100 GPO, Nairobi, Kenya

Telephone: 254 (0) 20 3867880-7, Fax: 254 (0) 20 3876955/3877373/3867888,  
 e-mail: [director@meteo.qo.ke](mailto:director@meteo.qo.ke), [info@meteo.qo.ke](mailto:info@meteo.qo.ke) Website: <http://www.meteo.qo.ke>

**WEATHER FORECAST FOR THE NEXT SEVEN-DAY PERIOD VALID  
 15<sup>TH</sup> TO 21<sup>ST</sup> MARCH, 2016**

*Issue Date: 14/03/2016*

**Review of weather for the last seven-day period 7<sup>th</sup> to 13<sup>th</sup> March, 2016):**

- Rainfall was reported over most parts of the country;
- Compared to the previous seven-day period, there was a general increase in rainfall amounts throughout the country;
- Day-time temperatures generally decreased over Western and Northwestern Kenya and increased over the rest of the country.
- Night-time temperatures increased over much of the country but decreased over Central and Northern areas.

**Forecast for the next seven days (15<sup>th</sup> to 21<sup>st</sup> March, 2016):**  
*The forecast indicates that:*

- Rainfall is expected over several parts of the country especially within Central and Western towards the end of the forecast period.

**1. Weather Review for the last seven days 7<sup>th</sup> to 13<sup>th</sup> March, 2016**

**1.1 Rainfall Review**

Rainfall was reported over most parts of the country. (See Fig 1) Compared to the previous seven-day period, there was a general increase in rainfall amounts throughout the country.

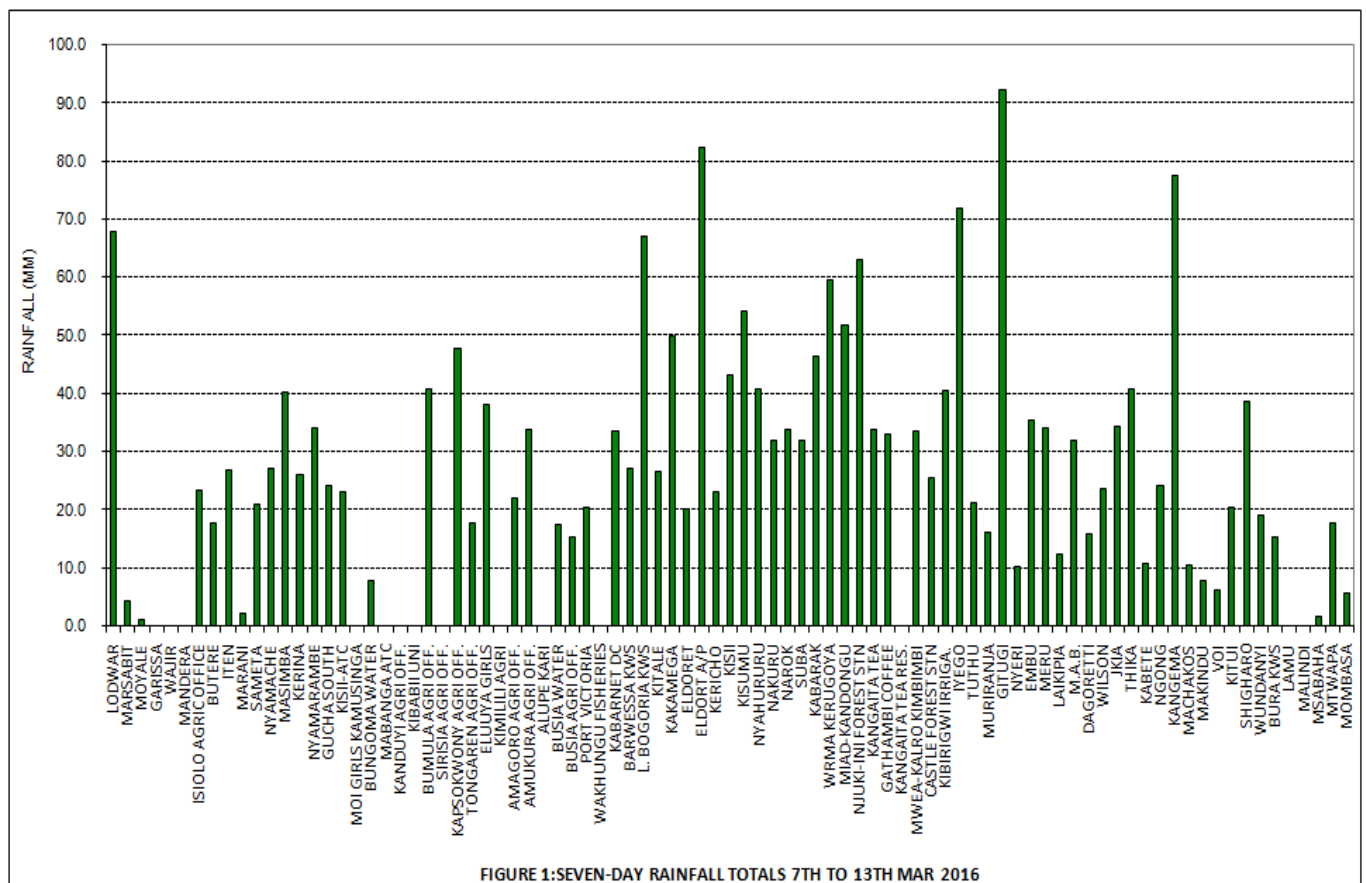


FIGURE 1:SEVEN-DAY RAINFALL TOTALS 7TH TO 13TH MAR 2016



## 2. FORECAST FOR THE NEXT SEVEN DAYS FROM 15<sup>TH</sup> TO 21<sup>ST</sup> MARCH, 2016

The forecast indicates that:

- Rainfall is expected over several parts of the country especially within Central and Western towards the end of the forecast period. The rainfall expected over parts of Western may mark the onset of the Long Rains.

## 3. DETAILED REGIONAL FORECAST FOR THE NEXT SEVEN DAYS 15<sup>TH</sup> TO 21<sup>ST</sup> MARCH, 2016

**The Lake Victoria Basin, Highlands West of the Rift Valley, Central and South Rift Valley (counties of Siaya, Kisumu, Homabay, Migori, Kisii, Nyamira, Transzoia, Baringo, Uasingishu, Elgeyo-Marakwet, Nandi, Laikipia, Nakuru, Narok, Kajiado, Kericho, Bomet, Kakamega, Vihiga, Bungoma and Busia)** are expected to experience sunny intervals the entire day on the first two days of the forecast period. From Thursday, mornings may be mainly sunny while afternoon/evenings showers and thunderstorms may occur over few places;

**Northwestern (counties of Turkana, West Pokot and Samburu)** are expected to experience mainly sunny intervals the whole day throughout the forecast period;

**Central Highlands including, Nairobi area (counties of Nairobi, Nyandarua, Nyeri, Kirinyaga, Murang'a, Kiambu, Meru, Embu, and Tharaka)** are expected to experience cloudy mornings giving way to sunny intervals for much of the forecast period. Afternoon/evening showers are expected over few places from Thursday onwards;

**Northeastern (counties of Marsabit, Mandera, Wajir, Garissa and Isiolo)** are expected to experience sunny intervals the entire day between Tuesday and Friday. Morning rains may occur over few places from Saturday;

**Southeastern (counties of Kitui, Makueni, Machakos and Taita Taveta)** are expected to experience sunny intervals the entire day between Tuesday and Thursday. Afternoon/evening showers are expected over few places from Friday onwards;

**The Coastal strip (counties of Mombasa, Tana River, Kilifi, Lamu and Kwale)** are expected to experience mainly sunny intervals the entire day between Tuesday and Friday. Morning showers may occur over few places from Saturday.

**N.B:** This forecast should be used in conjunction with the daily (24-hour) forecast issued by this Department.

### KEY OF SCIENTIFIC WORDS USED

**Most Places:** Between 66% and 100%

**Several Places:** Between 33% and 66%

**Few Places:** Between 0 and 33%

### *Rainfall categories*

Range	Category
<5 mm	Light
5 - 20mm	Moderate
20 - 50mm	Heavy
>50mm	Very heavy

**J. Gacheru,**

FOR DIRECTOR OF METEOROLOGICAL SERVICES